



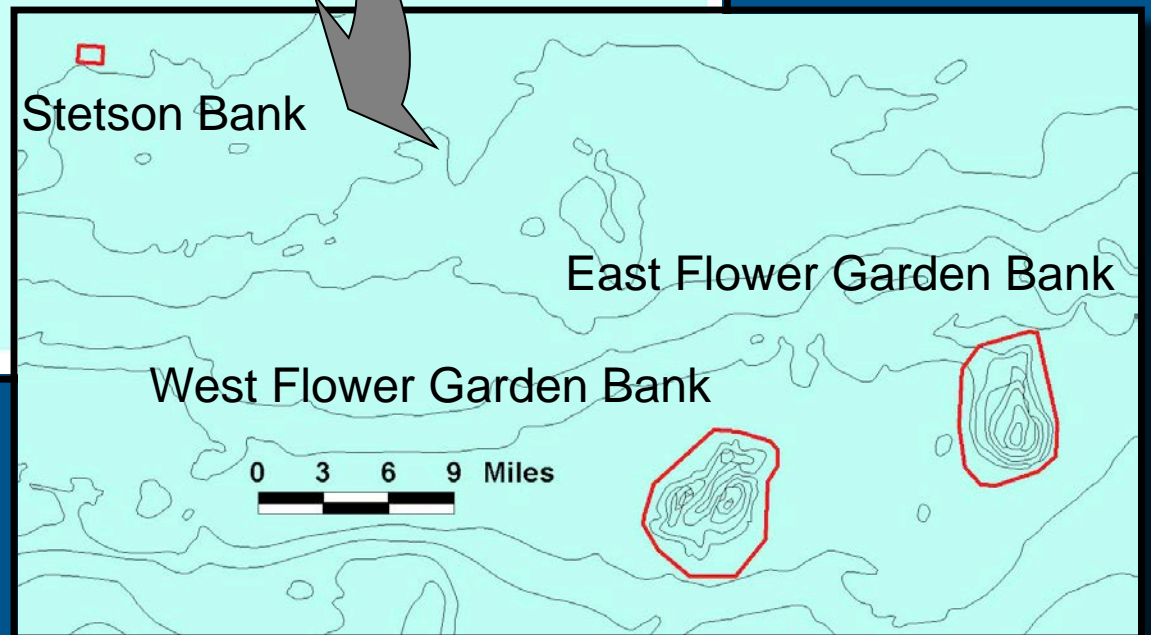
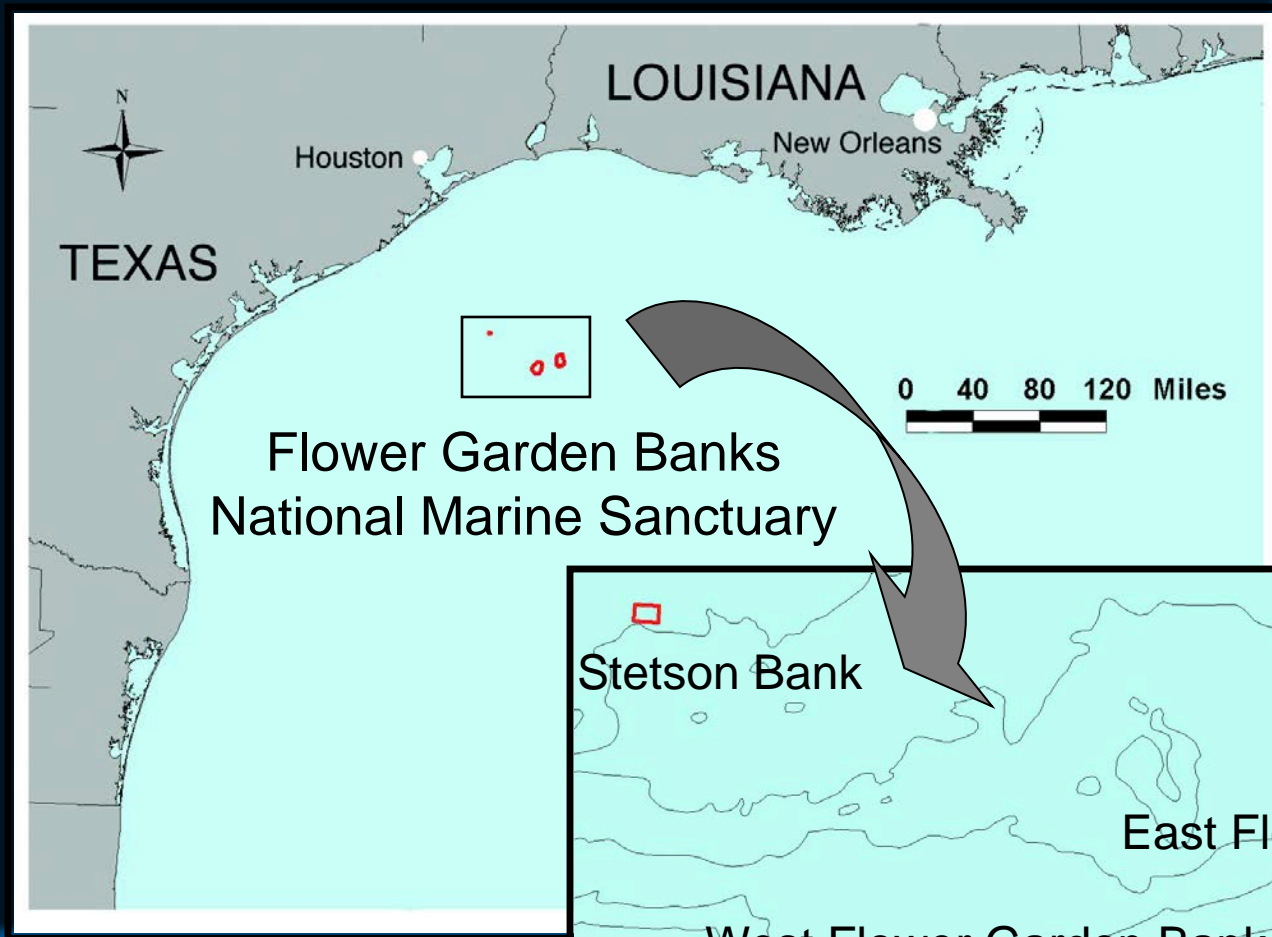
FLOWER GARDEN BANKS NATIONAL MARINE SANCTUARY

- [Visit](#) ▾
- [Get Involved](#) ▾
- [Learn](#) ▾
- [Science](#) ▾
- [About](#) ▾
- [Manage](#) ▾
- [News](#) ▾
- [Protect](#) ▾
- [Images](#) ▾
- [Documents](#) ▾

[HOME](#) / [MANAGEMENT](#) / [PROPOSED RULE FOR SANCTUARY EXPANSION](#)

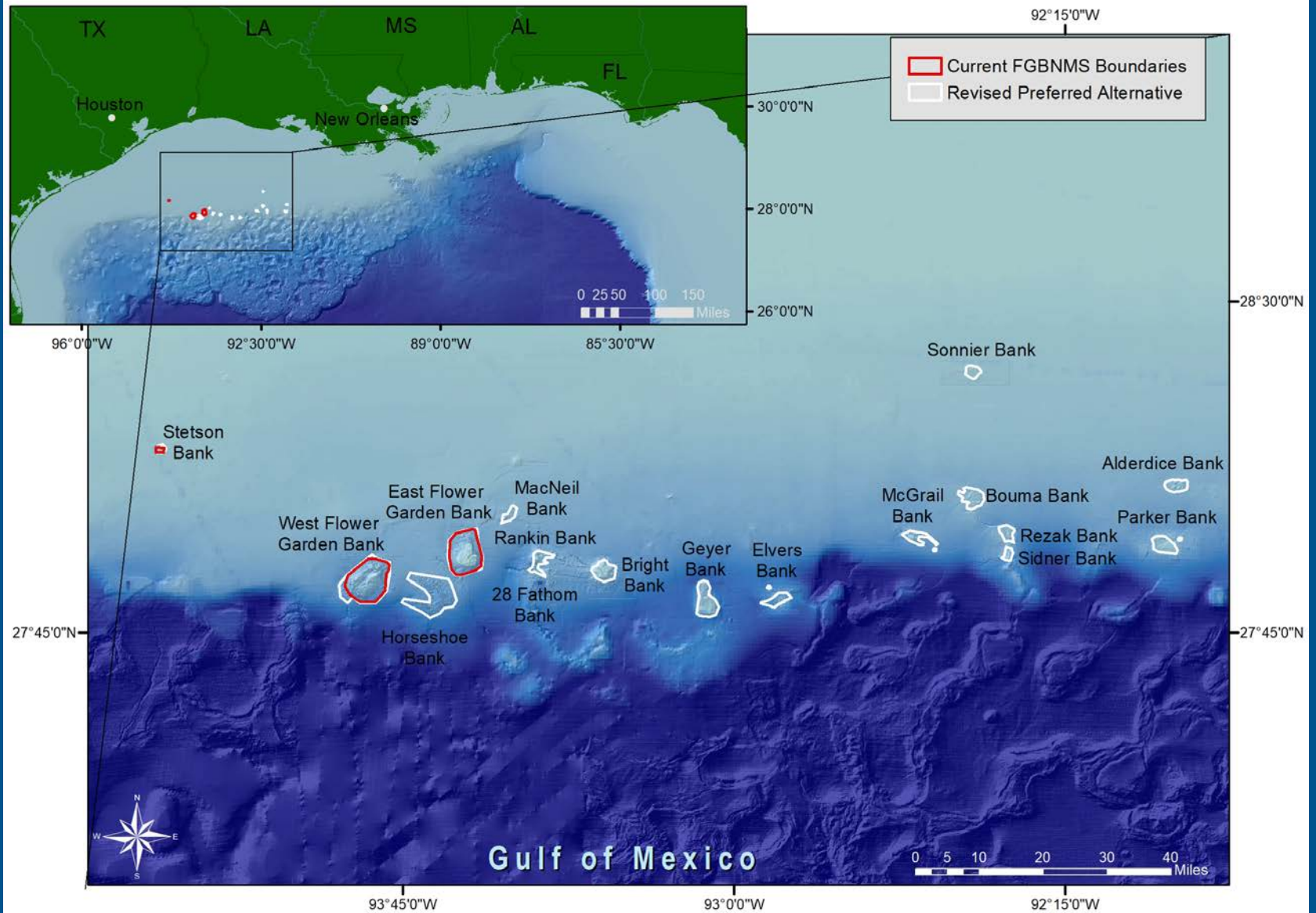
PROPOSED RULE FOR SANCTUARY EXPANSION

Expansion Proposed Rule – Published May 1, 2020

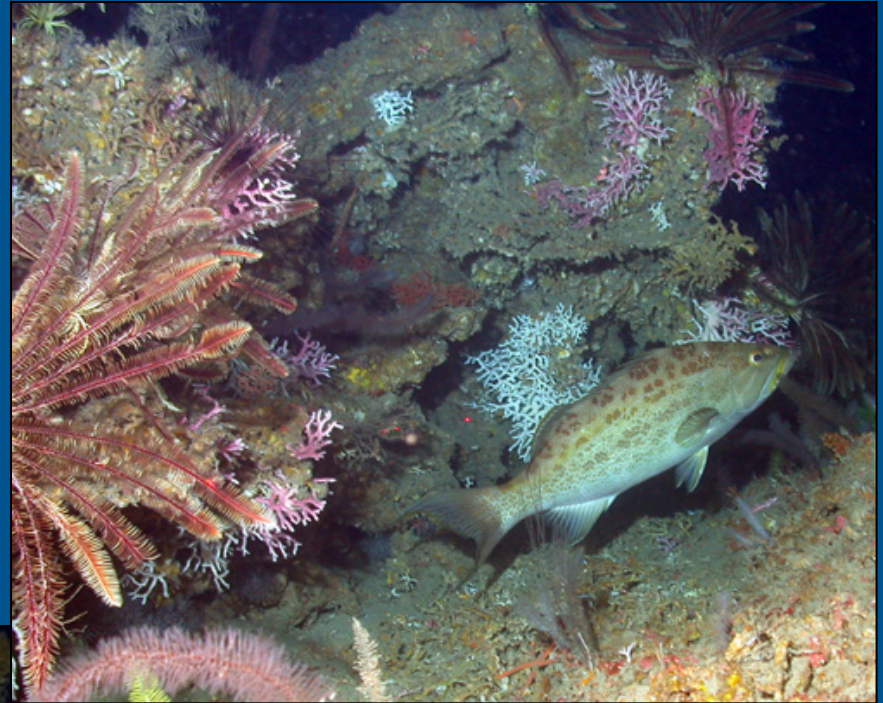


Remarkable Reefs of the Flower Garden Banks





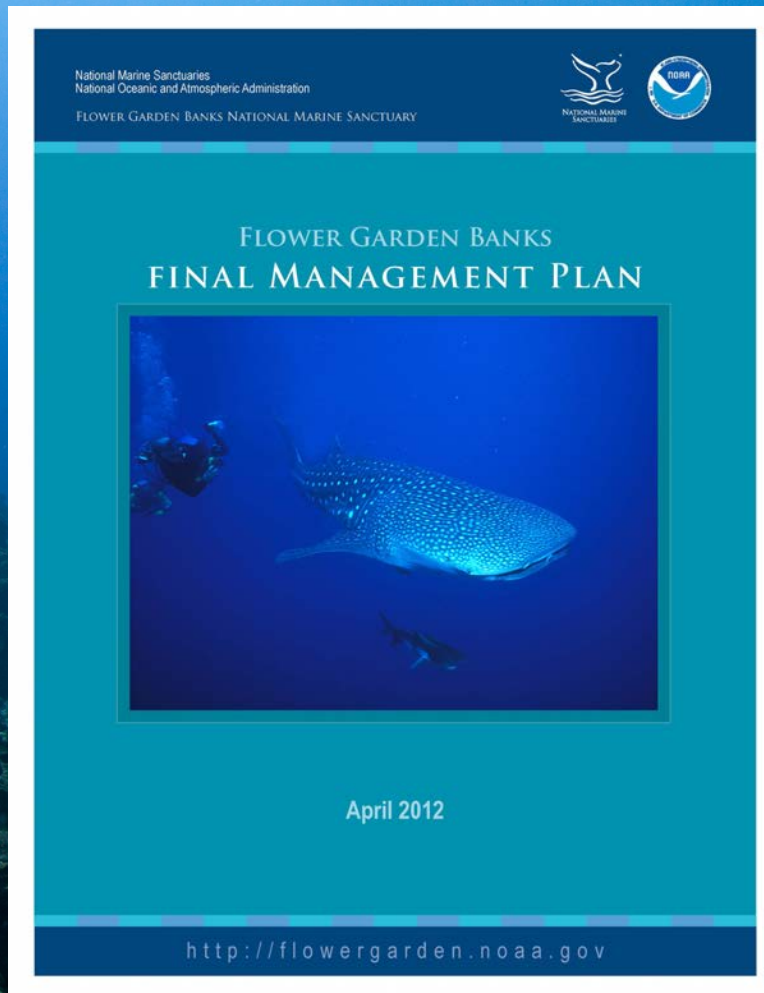
FGBNMS Revised Expansion Proposal – May 2020



Deep Coral
Communities of the
northwestern Gulf of
Mexico

Flower Garden Banks NMS Expansion – Proposed Rule

- Portions of 14 additional reefs and banks
- 104 square mile increase for a total of 160 square miles
- Apply existing regulations within the new areas
- Solicit public comment through July 3, 2020
 - 3 virtual public meetings
 - June 8, 2020 - 1:00 – 3:00 pm CDT
 - June 8, 2020 - 6:00 – 8:00 pm CDT
 - June 11, 2020 - 6:00 – 8:00 pm CDT
- Specific input requested on 3 areas
 - Boundary configurations
 - Pelagic longline gear exemption
 - Spearfishing gear exemption



Flower Garden Banks National Marine Sanctuary Revised Management Plan

- Process began in 2007
 - Draft released October 2010
 - Final Plan released April 27, 2012
 - Regulations effective May 29, 2012
- **Sanctuary Expansion**
 - Education and Outreach
 - Research and Monitoring
 - Resource Protection
 - Visitor Use
 - Operations and Administration



DRAFT ENVIRONMENTAL IMPACT
STATEMENT: SANCTUARY EXPANSION
VOLUMES I & II



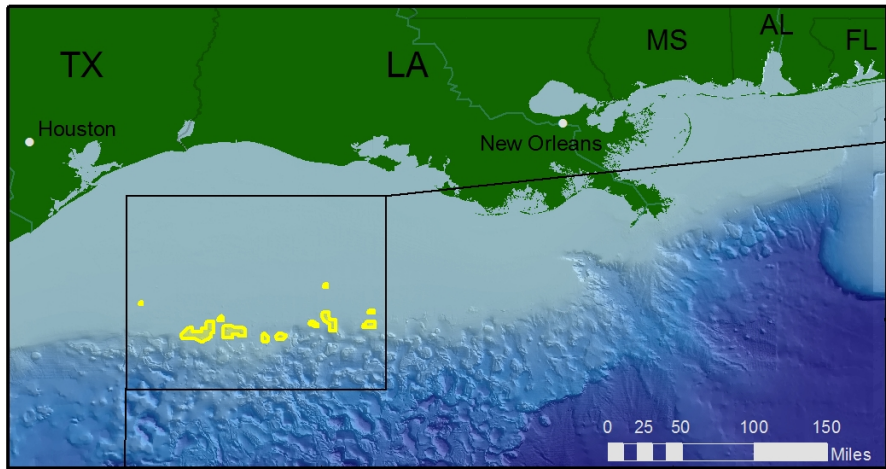
June 2016

<http://flowergarden.noaa.gov>

DRAFT ENVIRONMENTAL
IMPACT STATEMENT
SANCTUARY EXPANSION

DATE OF RELEASE:
June 10, 2016


PUBLIC COMMENT PERIOD:
June 10 – August 19, 2016

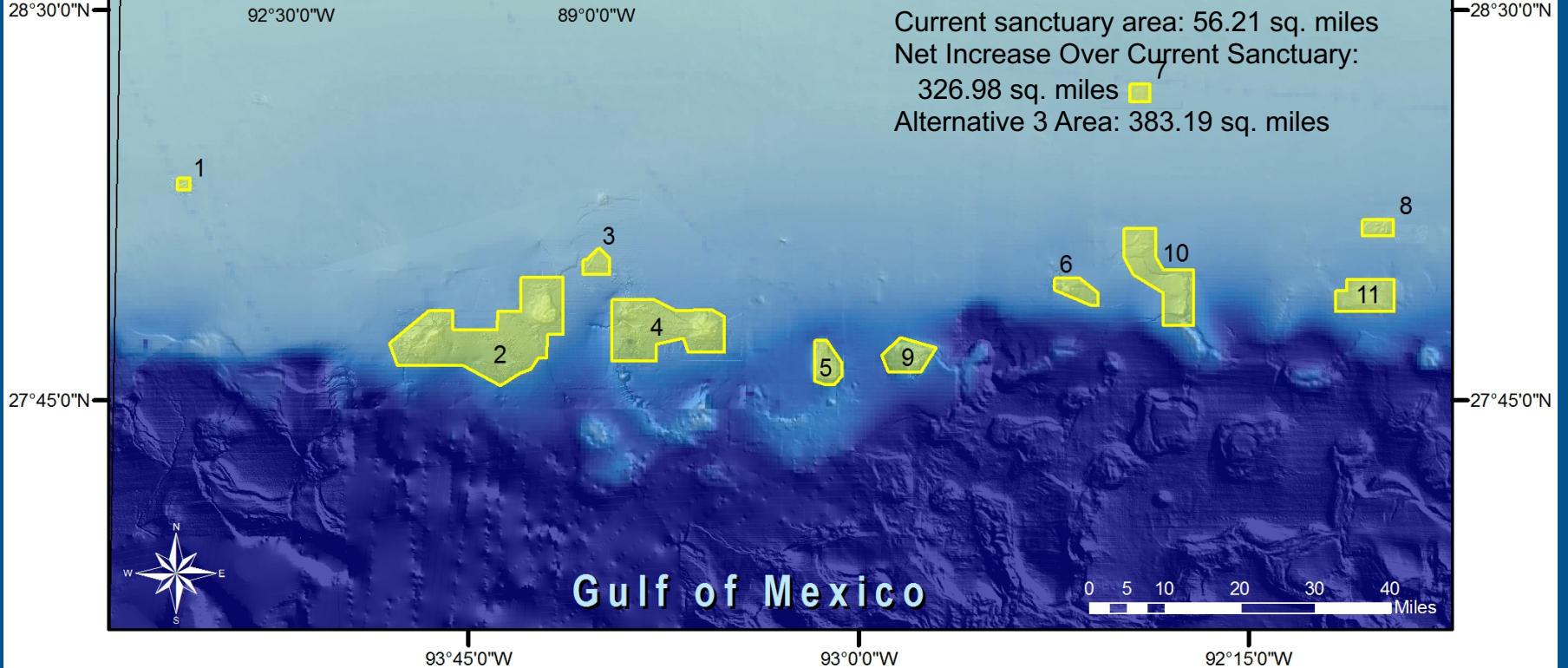


ALTERNATIVE 3

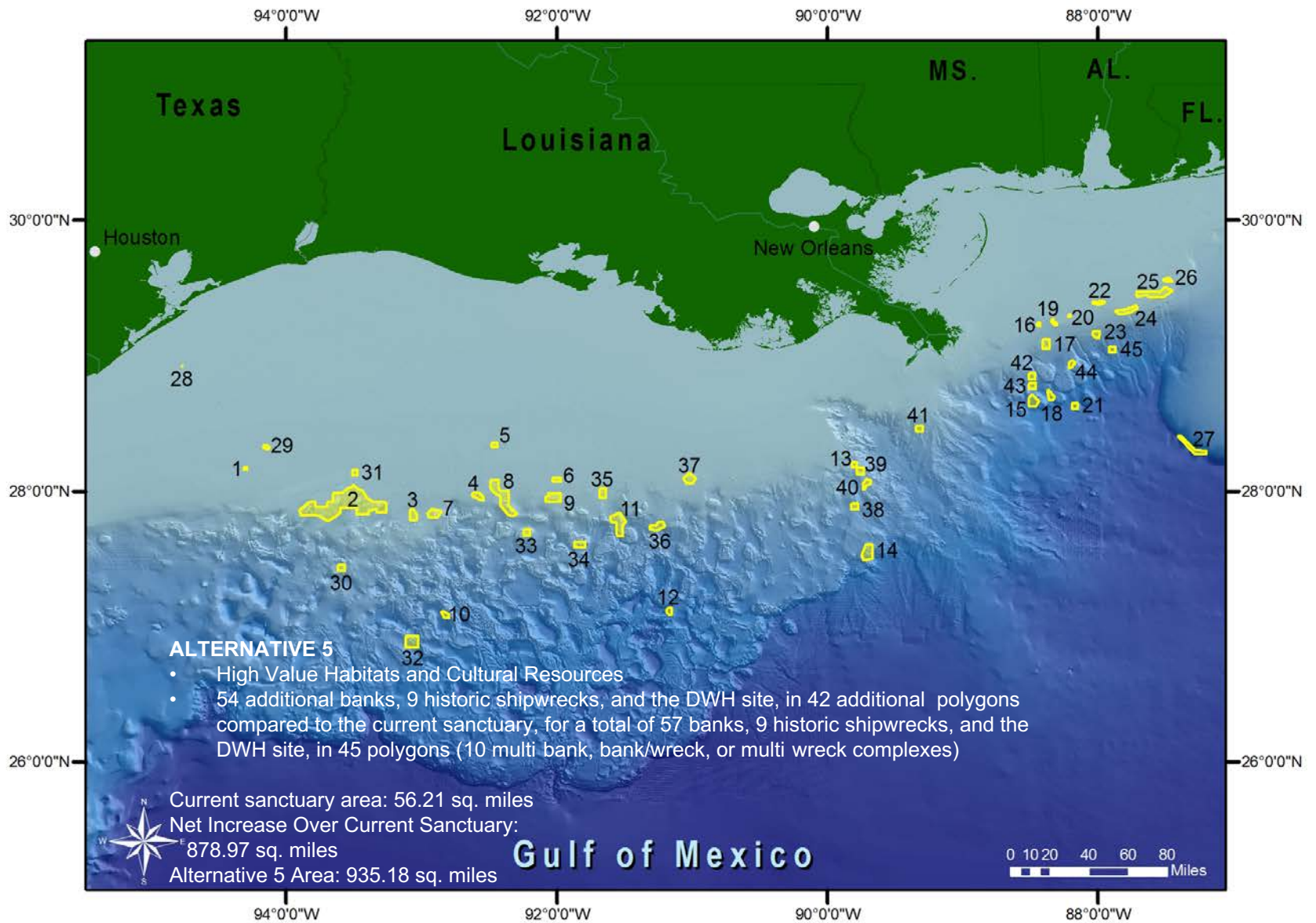
2015 Staff Recommendation PREFERRED ALTERNATIVE

- 15 additional banks in 8 additional polygons
- Including current sanctuary locations, a total of 18 banks, in 11 polygons (3 multi-bank complexes).

Current sanctuary area: 56.21 sq. miles
 Net Increase Over Current Sanctuary:
 326.98 sq. miles 
 Alternative 3 Area: 383.19 sq. miles



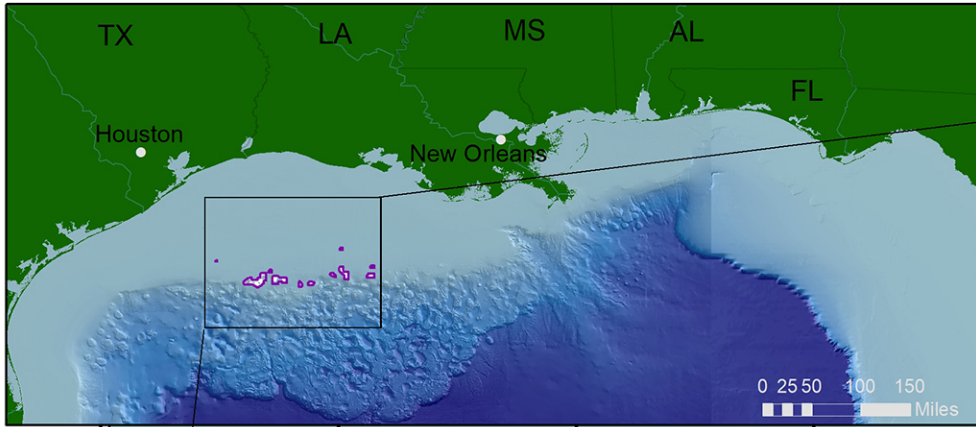
1. Stetson Bank; 2. West Flower Garden Bank, East Flower Garden Bank and Horseshoe Bank; 3. MacNeil Bank; 4. Rankin Bank, 28 Fathom Bank and Bright Bank; 5. Geyer Bank; 6. McGrail Bank; 7. Sonnier Bank; 8. Alderdice Bank; 9. Elvers Bank; 10. Bouma Bank, Bryant Bank, Rezak Bank and Sidner Bank; 11. Parker Bank



1. Stetson Bank; 2. West Flower Garden Bank, East Flower Garden Bank, Horseshoe Bank, MacNeil Bank, Rankin Bank, 28 Fathom Bank and Bright Bank; 3. Geyer Bank; 4. McGrail Bank; 5. Sonnier Bank; 6. Alderdice Bank; 7. Elvers Bank; 8. Bouma Bank, Bryant Bank, Rezak Bank, Sidner Bank, Tresslar Bank and Antoine Bank; 9. Parker Bank; 10. Hidalgo Basin Rim; 11. Assumption Dome; 12. St. Tammany Basin Rim; 13. Henderson Ridge North ; 14. Henderson Ridge South; 15. Biloxi Dome, R. E. Lee* and U166*; 16. Mountain Top; 17. Viosca Knolls West; 18. Gloria Dome and Deepwater Horizon*; 19. Alabama Alps, 36 Fathom Ridge; 20. West Addition Pinnacles; 21. Dauphin Dome; 22. Shark Reef, Double Top, Triple Top; 23. Viosca Knolls East; 24. Ludwick-Walton and West Delta Mounds; 25. Yellowtail, Cat's Paw, Roughtongue, Corkscrew; 26. Far Tortuga; 27. Desoto Canyon/West Florida Escarpment; 28. USS Hatteras*; 29. Claypile Bank; 30. Galvez/Frye Basins Ridge; 31. 29 Fathom Bank; 32. Monterrey Wrecks*; 33. Tunica Mound; 34. Jeanerette Dome; 35. Jakkula Bank; 36. Penchant Basin Rim; 37. Ewing Bank; 38. Henderson Ridge Mid-South; 39. GulfOil*; 40. Henderson Ridge Mid-North; 41. GulfPenn*; 42. Whiting Dome; 43. Mardi Gras*; 44. Horn Dome; 45. Anona*



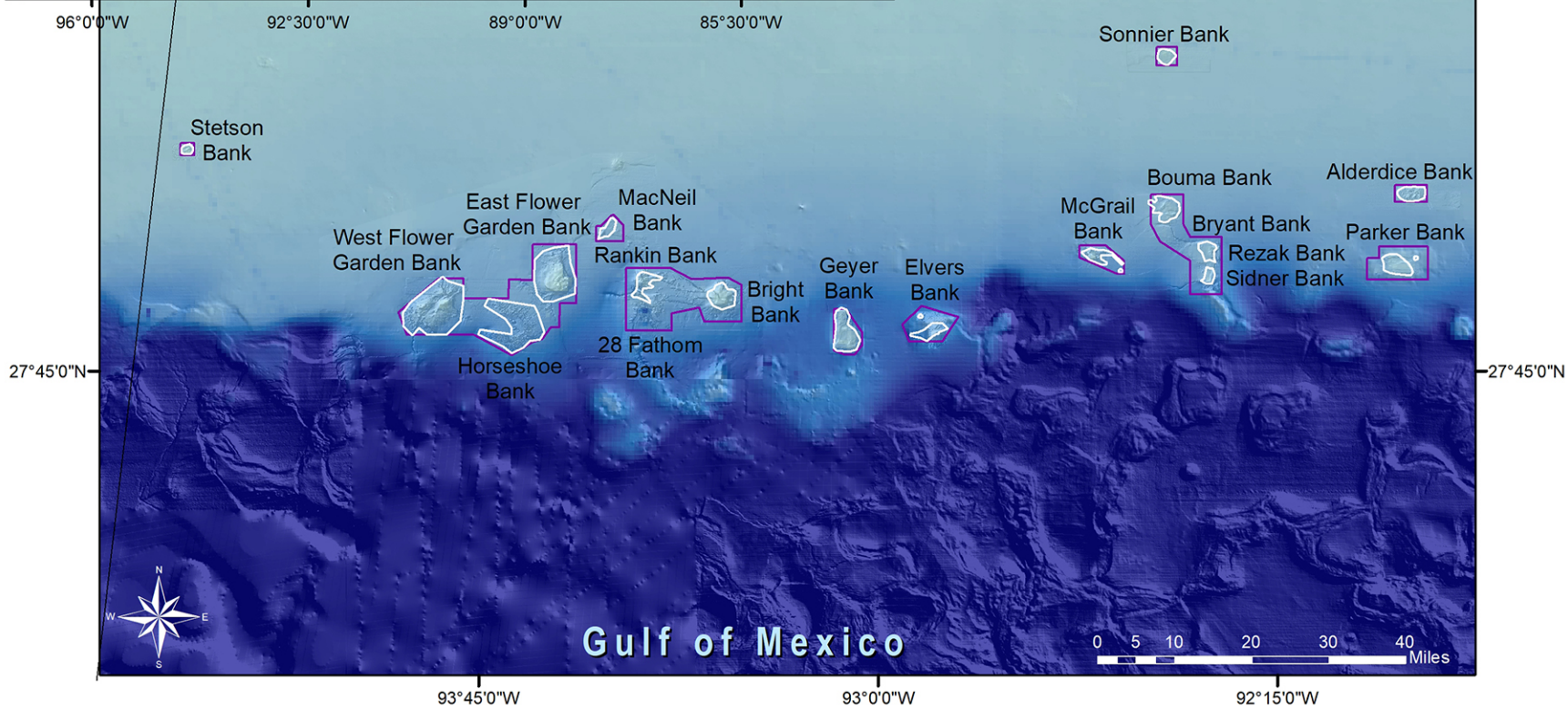
Boundary Expansion Working Group – May 2018



Legend:
2016 DEIS Preferred Alternative (pink outline)
Revised Preferred Alternative (white outline)

2016 DEIS: 383 mi²

2020 NPR: 160 mi²



National Marine Sanctuaries
National Oceanic and Atmospheric Administration



NATIONAL MARINE
SANCTUARIES

FLOWER
GARDEN BANKS

<http://flowergarden.noaa.gov>