

# Joint Working Group on Vessel Strikes and Acoustic Impacts

- *High Industry Engagement*
- *Balanced Participation*
- *Reviewed Objectives*
- *Brainstormed Recommendations*
- *Began Work on Action Plan*
- *Formed Expert Teams*

## Co-Chairs

Lance Morgan, MCBI; CBNMS SAC

Jackie Dragon, Greenpeace; GFNMS SAC alternate

## Working Group Members

Michael Jasny, Natural Resources Defense Council

Carol Keiper, Oikonos

John Calambokidis, Cascadia Research

Frances Gulland, The Marine Mammal Center

John Hildebrand, Acoustician Scripps

John Berge, Pacific Marine Shipping Association

Kathy Metcalf, Chamber of Shipping of America

Captain Bill Mahoney, APL Maritime, Ltd.

CDR, Kiley Ross, USCG Inspections and Investigations Branch Chief

Peter Fischel, SW Regional Office NMFS

## Co-Chairs

Lance Morgan, MCBI; CBNMS SAC

Jackie Dragon, Greenpeace; GFNMS SAC alternate

## Working Group Members

Michael Jasny, Natural Resources Defense Council

Carol Keiper, Oikonos

John Calambokidis, Cascadia Research

Frances Gulland, The Marine Mammal Center

John Hildebrand, Acoustician Scripps

John Berge, Pacific Marine Shipping Association

Kathy Metcalf, Chamber of Shipping of America

Captain Bill Mahoney, APL Maritime, Ltd.

CDR, Kiley Ross, USCG Inspections and Investigations Branch Chief

Peter Fischel, SW Regional Office NMFS



## Technical Experts/Advisors

Leila Hatch, Stellwagen Bank National Marine Sanctuary

Captain Bruce Horton, Port Agent SF Bar Pilots

John Largier, Physical Oceanographer, UC Davis, Bodega Marine Lab

Ingrid Overgaard, Ocean Noise and Policy Expert

## Expert Teams

1. Policy and Management Team: (Elizabeth Petras, NMFS)
  - Speed Reduction
  - SMAs or DMAs
  - On-Board Observers
  - Incentives for Industry to Change Behavior
  - ATBAs
  
2. Education and Outreach Team (Kathy Metcalf, Chamber of Shipping of America)
  - Establish a Communication Network (e.g. maritime industry, gov. agencies, ship's agents and pilots, etc)
  - Learn from Other Sites (East Coast and CINMS)



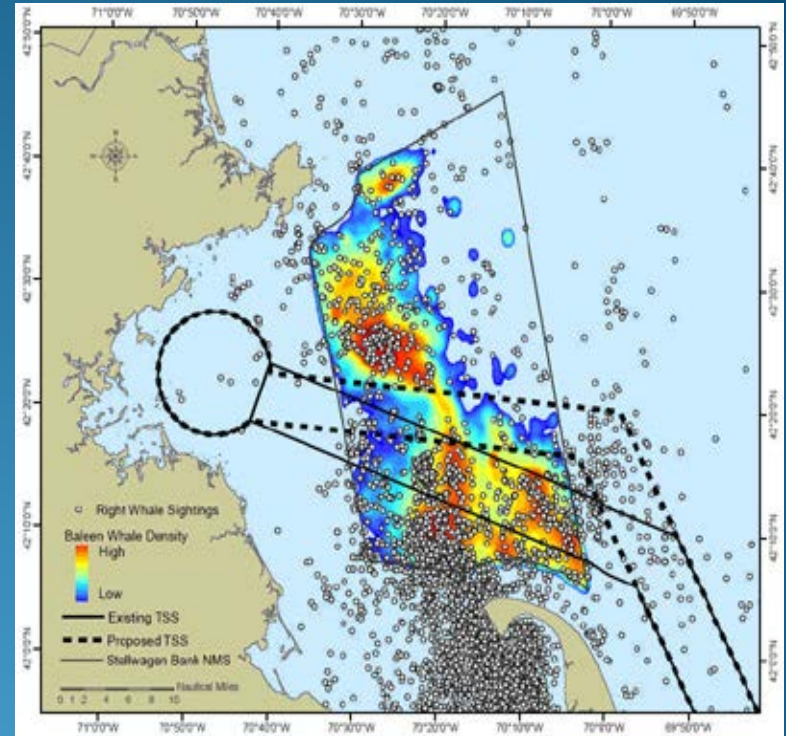
### 3. Research and Monitoring Team

1. Spatial (eg: habitat models, distribution of vessels, whales)
2. Species (Which species are more or less vulnerable?)
3. Whale Behavior (what are whales doing and when are they doing it?)
4. Ship/Whale Interactions  
(how does speed or noise from ships affect whales?)



# Proposed Analyses

- AIS Analysis of Ship Speed
  - Archival
  - Real-Time Data to Inform Management
- Acoustic Profile of Sanctuary
  - John Hildebrand?
- Maps of Whale and Vessel Distribution in Sanctuary
  - Michael Carver, ACCESS
  - Carol Keiper, Biogeographic Assessment



# PARS Update

- PARS Recommendations are at HQ in Washington DC
- On-Track for Implementation, but Timing Uncertain
- Public Comment? ANPR (possibly Spring 2012)
- Rulemaking Process will trigger ESA Consultation and a NMFS Biological Opinion (Jeopardy for any species?)
- JWG will consider an interim recommendation to SAC to send USCG a letter of support, urging the initiation of rulemaking process



# Other Issues:

- Prioritize Species (Blues, Humpbacks, Fins, Grays)
- Vessels of Opportunity for Monitoring
- Measurable Outcomes (We want 'em!)
- Correction Factor (How many whales actually get struck by ships in the region?)
- Identify Key Partners
- Recommended Traffic Lanes to Avoid Whales
- Complex Relationship Between Strikes and Noise
- Socio-Economic Impacts

# Next Meetings:



January 19 (Acoustic Focus)

March 22

May 17